

Apartment No. P23A11 for Sale - Seychelles, Eden Island

Location: resort Eden Island, northeast coast of the main island of Mahé

***Unit internal area: 151 m², unit covered area: 64 m², boat mooring: 28.5 x 15 m
(3 bedrooms, covered terrace, private boat mooring at the apartment house)***

Price: USD 995,000 (incl. furniture) + 1.5 % Notary Fee

(Except for the notary fee, there are no other fees associated with the sale of the apartment)



Boat mooring location

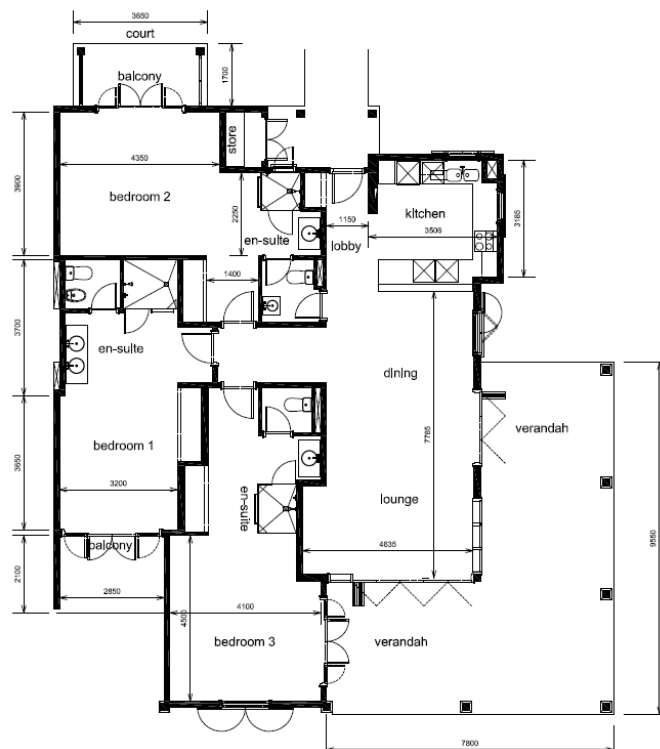
Apartment location



Basic information

- Eden Island Resort is located on Eden Island next to Mahé, the largest island in the Seychelles, about 7 km from the Seychelles International Airport and about 5 km from the capital city of Victoria.
- The resort provides very comfortable facilities - 4 sandy beaches, 3 communal swimming pools, fitness centre, tennis and padel court. Security service 24/7.
- Within walking distance is the Eden Plaza shopping gallery with a private medical health center Euromedical Family Clinic, shops, restaurants and cafés, pharmacy, bank, exchange office and Spar supermarket with grocery, drugstore, and others.
- This is a corner apartment in colonial style, located on the first floor of apartment house No. 23, overlooking the marina and the main island of Mahé.
- The apartment has an internal area of 151 m², 3 bedrooms, each with en-suite bathroom and separate toilet, living area with dining area and kitchen, covered terraces (verandas) with a total area of 64 m² and a covered golf buggy parking space.
- The apartment is fully furnished, air-conditioned and equipped with all electrical appliances. All this equipment is included in the purchase price.
- The apartment has its own boat mooring No. 110 of 28.5 x 15 m located at the apartment house.
- The owner of a property in Seychelles is entitled to apply for a long-term residence permit.

Floor plan:







View from the apartment to the Super Yacht Marina and the island of Mahé



Anse Bernitier beach (approx. 3 minutes walk from the apartment house)

