

Apartment with loft for Sale - Seychelles, Eden Island

Location: resort Eden Island, northeast coast of the main island of Mahé

*Unit total area: 209.5 m², unit internal area: 144.8 m², unit covered area: 64.7 m²
(3 bedrooms, private boat mooring, spacious terrace overlooking the island of Sainte Anne)*

Price: USD 668,000 (incl. furniture) + transfer taxes

(5% Stamp duty, 1,5% Sanction Application Processing Fee, cca 2% Notary Fee)



Boat mooring location

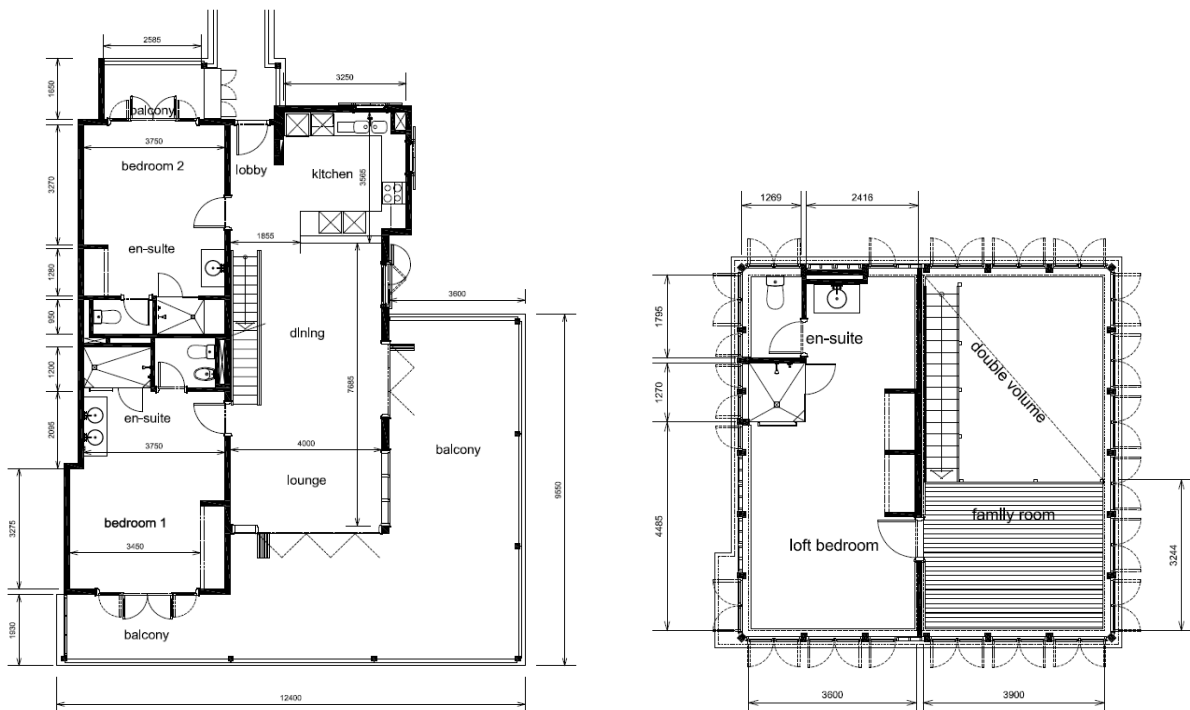
Apartment location



Basic information:

- Eden Island Resort is located on Eden Island next to Mahé, the largest island in the Seychelles, about 7 km from the Seychelles International Airport and about 5 km from the capital city of Victoria.
- The resort provides very comfortable facilities - 4 sandy beaches, 3 communal swimming pools, fitness centre, tennis and padel court. Security service 24/7.
- Within walking distance is the Eden Plaza shopping gallery with a private medical health center Euromedical Family Clinic, shops, restaurants and cafés, pharmacy, bank, exchange office and Spar supermarket with grocery, drugstore, and others.
- This is a colonial-style apartment with loft No. P147A21, located on the second floor of the apartment house overlooking the marina and the neighbouring island of Sainte Anne.
- The apartment has a living area of 144.8 m², 3 bedrooms (of which 1 bedroom in the loft), each with en-suite bathroom and toilet, entrance hall, living area with dining area and kitchen, family room and spacious covered terrace (veranda) with a total area of 64.7 m².
- The apartment is fully furnished, air-conditioned and equipped with all electrical appliances. (The purchase price includes all equipment.)
- The apartment is sold together with a covered golf buggy parking space and its own boat mooring No. 335 of 12 x 4.9 m close to the apartment house.
- The owner of a property in Seychelles is entitled to apply for a long-term residence permit.

Floor plan





View from the apartment of the island of Sainte Anne

