

Apartment No. P240A22 for Sale - Seychelles, Eden Island

Location: resort Eden Island, northeast coast of the main island of Mahé

Unit internal area: 97.4 m², unit covered area: 23.4 m²

(2 bedrooms, 2 bathrooms, covered terrace, private mooring near the apartment house)

Price: USD 550,000 (incl. furniture) + transfer taxes

(5% Stamp duty, 1.5% Sanction Application Processing Fee, cca 1.5% Notary Fee)



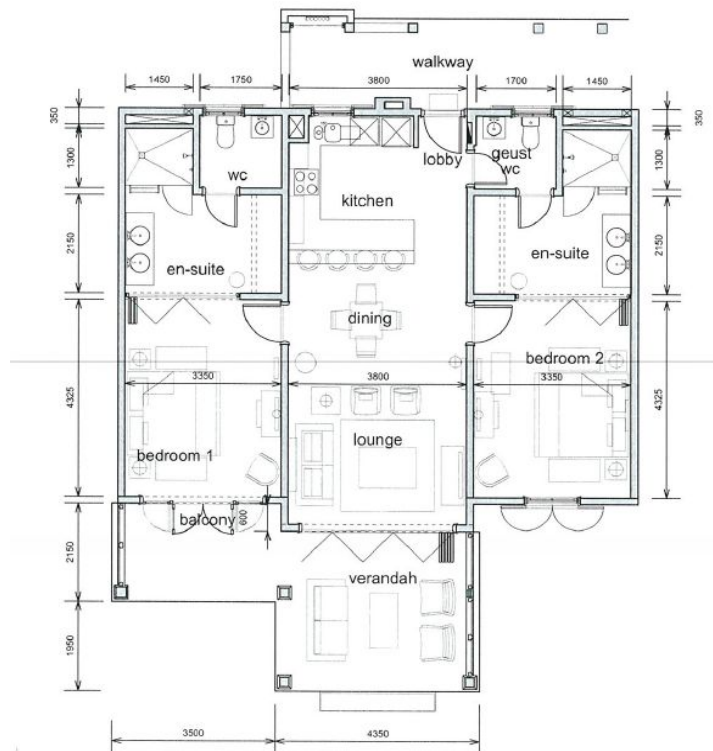
Location on Eden Island



Basic information:

- Eden Island Resort is located on Eden Island next to Mahé, the largest island in the Seychelles, about 7 km from the international airport and about 5 km from the capital city of Victoria.
- The resort provides very comfortable facilities - 4 sandy beaches, 3 communal swimming pools, fitness centre, tennis and padel court. Security service 24/7.
- Within walking distance is the Eden Plaza shopping gallery with a private medical health center Euromedical Family Clinic, shops, restaurants and cafés, pharmacy, bank, exchange office and Spar supermarket with grocery, drugstore, and others.
- The apartment is located on the second floor of the apartment house overlooking the main island of Mahé.
- The apartment has a living area of 97.4 m², 2 bedrooms, each with en-suite bathroom and separate toilet, a living area connected to the dining area and kitchen, a covered terrace of 23.4 m², outdoor seating and barbecue.
- The apartment is fully furnished, air-conditioned, equipped with all electrical appliances and Wi-Fi connection. It is sold including all equipment.
- The apartment is sold together with a parking space for one car and a reserved boat mooring of approx. 76 m², located just a few dozen meters away.
- The owner of a property in Seychelles is entitled to apply for a long-term residence permit.

Floor plan:



Apartment house



Location of the apartment





