

Apartment B1 - Seychelles, Pangia Beach

Location: resort Pangia Beach, east coast of the main island of Mahé

Gross area: 156 m², **garden area:** 80 m²

(2 bedrooms, garden, splash pool, boat mooring, garage, carport, direct access to the beach)

Price: USD 890,000 + 10 % transfer taxes

(The price includes all apartment equipment.)

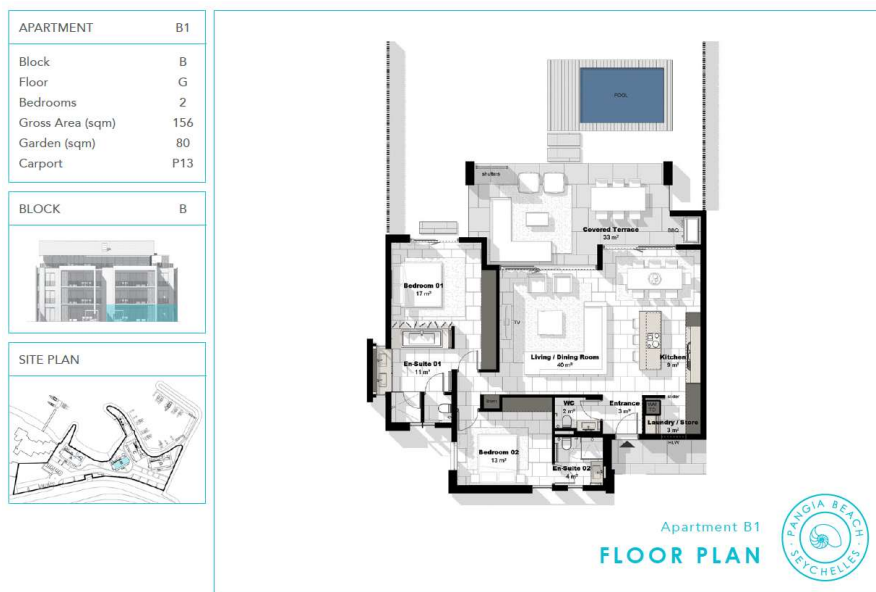


Apartment location in Pangia Beach



Basic information:

- The apartment is located in the boutique resort of Pangia Beach, which has won prestigious international awards such as Best Residential Project in Seychelles and Best Residential Project in Africa.
- The capital city of Victoria is 5 km away from the resort, as well as the Seychelles International Airport. Eden Island with shopping gallery, private medical health center and international super-yacht marina are 5 min. drive away.
- The resort provides very comfortable communal facilities - clubhouse, swimming pool, gym, direct access to the private beach and private marina. Security service 24/7.
- This is a modern ground floor beach apartment with a gross area of 156 m², 2 bedrooms, each with en-suite bathroom and toilet, a central living area with dining area and kitchen, laundry/store and a separate guest toilet.
- The living room is surrounded by a covered outdoor terrace, which flows into a 80 m² garden with a private splash pool and direct access to the beach.
- The apartment is air-conditioned, fully furnished with modern furniture and equipped with Miele electrical appliances. All this equipment is included in the purchase price.
- The purchase price also includes one outdoor carport, a garage and a 5 x 10 meters boat mooring No. 26 in Pangia Beach private marina. If interested, it is also possible to purchase the adjacent boat mooring No. 25 for USD 25,000.
- The apartment is sold on freehold title. The owner can rent out his/her apartment on a long-term basis. (Short-term rentals are not allowed in Pangia Beach.)
- The owner of a property in Seychelles is entitled to apply for a long-term residence permit.



Location of the apartment - Block B



Garage

Block B

Boat mooring







View from the garden



Communal facilities

