

Apartment B6 - Seychelles, Pangia Beach

Location: resort Pangia Beach, east coast of the main island of Mahé

Gross area: 151 m², covered terrace: 30 m²

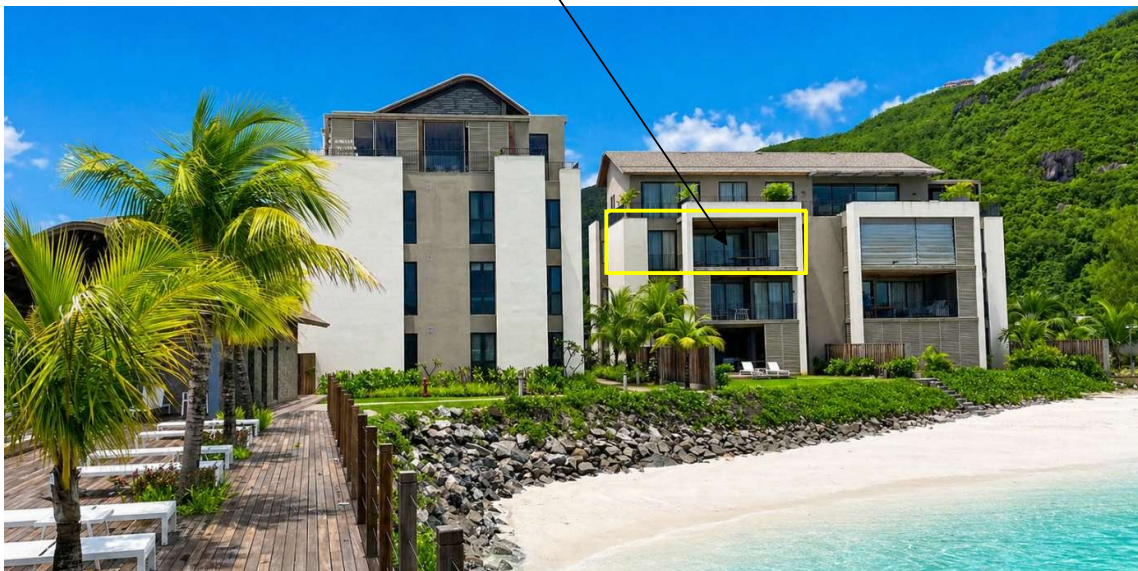
(2 bedrooms, covered terrace, garage, carport, large boat mooring, direct access to the beach)

Price: USD 950,000 + 10 % transfer taxes

(The price includes all apartment equipment.)



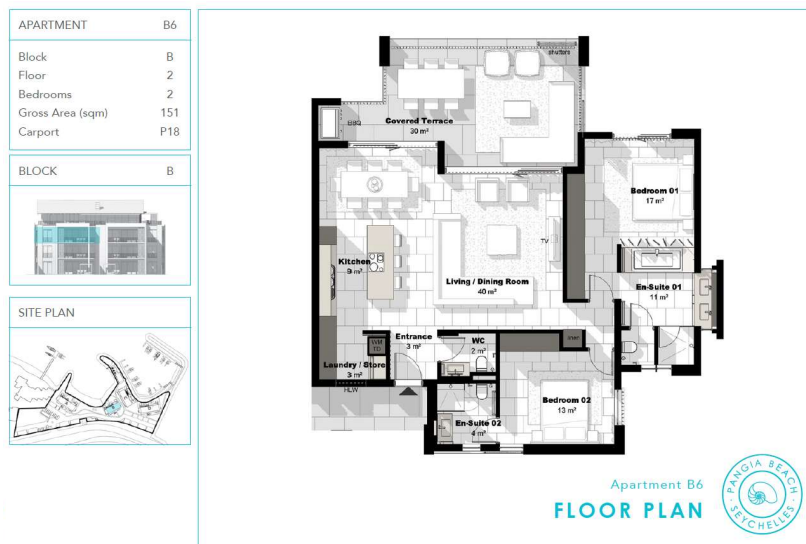
Apartment location



Basic information:

- The apartment is located in the boutique resort of Pangia Beach, which has won prestigious international awards such as Best Residential Project in Seychelles and Best Residential Project in Africa.
- The capital city of Victoria is 5 km away from the resort, as well as the Seychelles International Airport. Eden Island with shopping gallery, private medical health center and international super-yacht marina are 5 min. drive away.
- The resort provides very comfortable communal facilities - clubhouse, swimming pool, gym, direct access to the private beach and private marina. Security service 24/7.
- This is a modern apartment located on the third floor of the apartment house - Block B, overlooking the ocean, the main island of Mahé and the resorts Eden Island and The Residences at Meliá Seychelles. (The apartment house is equipped with an elevator.)
- The apartment has a gross area of 151 m², 2 bedrooms, each with en-suite bathroom and toilet, living area with dining area and kitchen, guest toilet, laundry/store and a covered terrace of 30 m².
- The apartment is air-conditioned, fully furnished with modern furniture and equipped with Miele electrical appliances. All this equipment is included in the purchase price.
- The purchase price also includes one outdoor carport, a garage and a large private boat mooring No. 4 in Pangia Beach private marina.
- The apartment is sold on freehold title. The owner can rent out his/her apartment on a long-term basis. (Short-term rentals are not allowed in Pangia Beach.)
- The owner of a property in Seychelles is entitled to apply for a long-term residence permit.

Apartment floor plan:



Location of the apartment - Block B



Block B

Private boat mooring











View from the terrace



Communal facilities

