

Beach apartment B2 for Sale - Seychelles, Pangia Beach

Location: resort Pangia Beach, east coast of the main island of Mahé

Unit area: 151 m², garden area: 171 m²

(2 bedrooms, garden, private swimming pool, direct access to the beach)

Price: USD 850,000 + 10 % transfer taxes

(The price includes all apartment equipment.)



Location in Pangia Beach



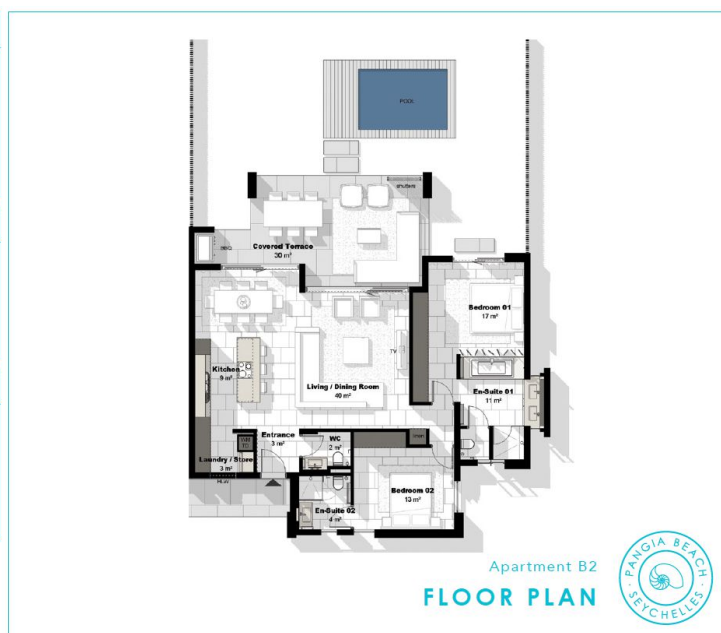
Basic information:

- The apartment is located in the boutique resort of Pangia Beach, which has won prestigious international awards such as *Best Residential Project in Seychelles* and *Best Residential Project in Africa*.
- Eden Island, Eden Plaza shopping mall, private clinic, Eden Island international marina and Roche Caiman Sports Complex are 5 minutes drive and Sainte Anne Marine National Park 5 minutes by boat from Pangia Beach.
- The capital city Victoria is 5 km away from the resort, as well as the Seychelles International Airport.
- This is a modern ground floor beach apartment with a living area of 151 m², 2 bedrooms, each with en-suite bathroom and separate toilet, a central living area with dining area and kitchen, technical facilities and a separate guest toilet.
- The living room is surrounded by a covered outdoor terrace, which flows into a 171 m² garden with a private swimming pool and direct access to the beach.
- One outdoor parking space, a 21 m² garage and a 10 x 5 metre boat mooring in the private marina of Pangia Beach belong to the apartment.
- The apartment is fully furnished with designer furniture, air-conditioned and connected to the Wi-Fi and security system. (The apartment is sold including all equipment.)
- The apartment is sold and transferred to Purchaser on freehold title. The owner can rent out his/her apartment on a long-term basis. (Short-term rentals are not allowed in Pangia Beach).
- The owner of a property in Seychelles is entitled to apply for a long-term residence permit.

APARTMENT	B2
Block	B
Floor	G
Bedrooms	2
Gross Area (sqm)	151
Garden (sqm)	140
Carport	P14



WWW.PANGIABEACH.COM
All site plans, floor plans, areas, dimensions and specifications are subject to change until the final completion of the project.



Location of the apartment - Block B





